

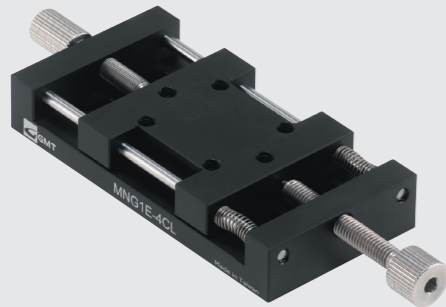
MNG1E-20CL



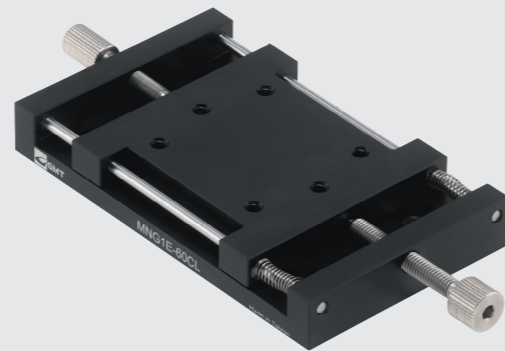
MNG1E-25CL



MNG1E-40CL



MNG1E-60CL



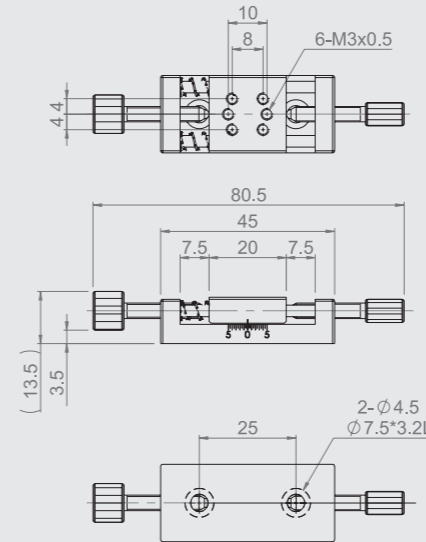
Specification

Unit : mm

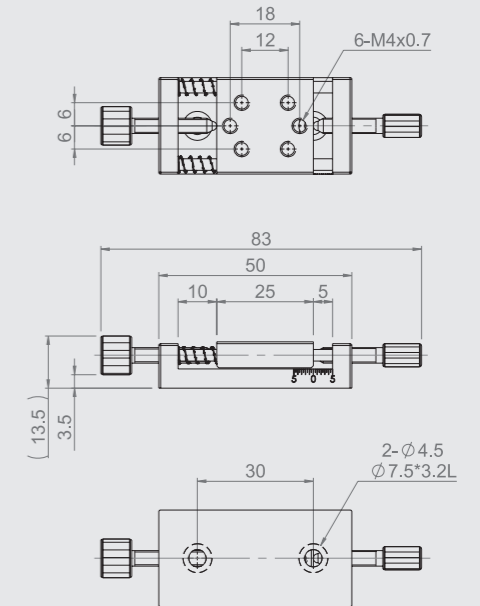
Model No.	Table Size	Axis	Travel Stroke	Minimum Reading (mm)	Allowable Loading (kgf)	Weight (kg)	Material	Surface Finish
MNG1E-20CL	20*20	X-axis	±5	0.5	0.2	0.038	Aluminum alloy	Black anodized
MNG1E-25CL	25*25					0.055		
MNG1E-40CL	40*40		±7.5		0.104			
MNG1E-60CL	60*60				0.193			

★ A full rotation of the feeding screw knob equals a 0.5mm stroke.

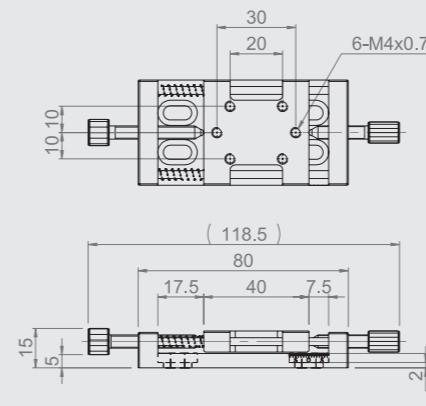
MNG1E-20CL



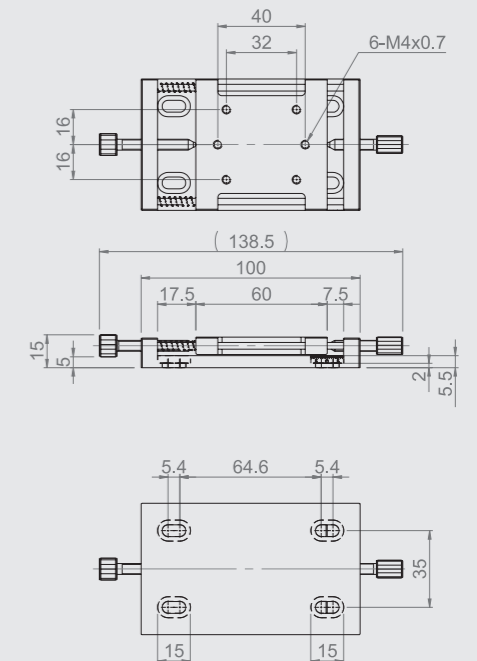
MNG1E-25CL



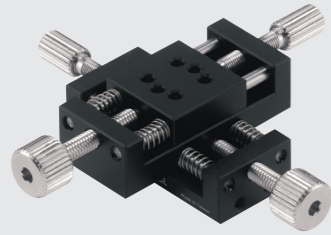
MNG1E-40CL



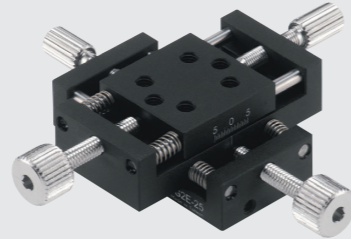
MNG1E-60CL



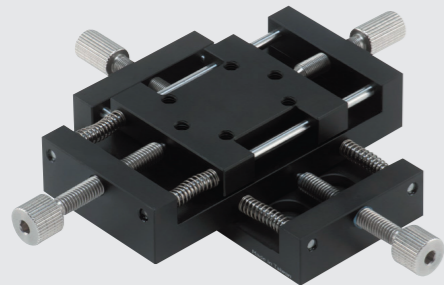
MNG2E-20CL



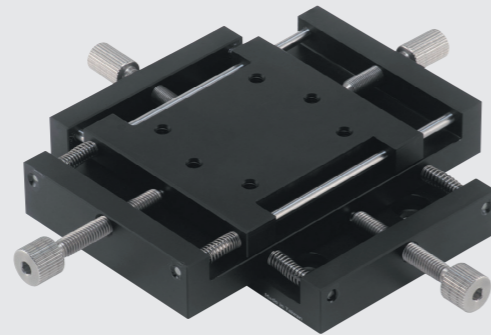
MNG2E-25CL



MNG2E-40CL



MNG2E-60CL



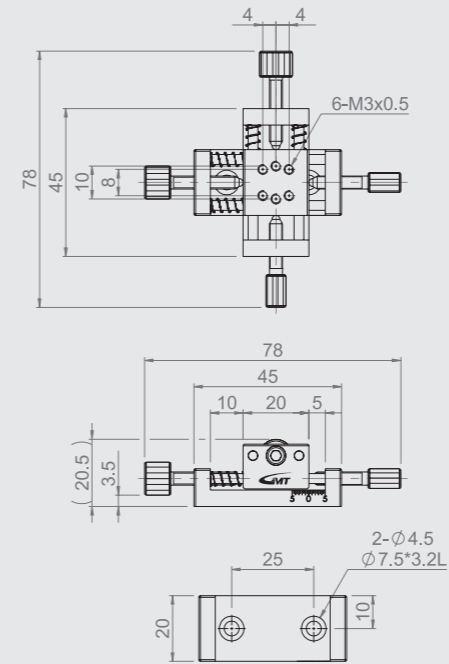
Specification

Unit : mm

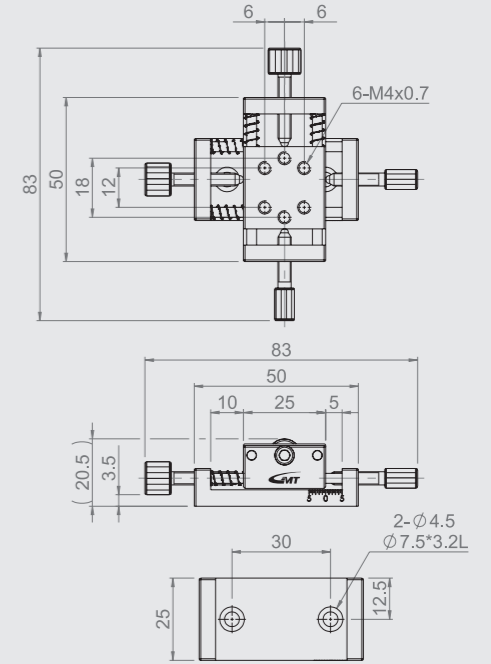
Model No.	Table Size	Axis	Travel Stroke	Minimum Reading (mm)	Allowable Loading (kgf)	Weight (kg)	Material	Surface Finish
MNG2E-20CL	20*20	XY-axis	±5	0.5	1	0.038	Aluminum alloy	Black anodized
MNG2E-25CL	25*25					0.055		
MNG2E-40CL	40*40		±7.5		0.202			
MNG2E-60CL	60*60				0.358			

★ A full rotation of the feeding screw knob equals a 0.7mm stroke.

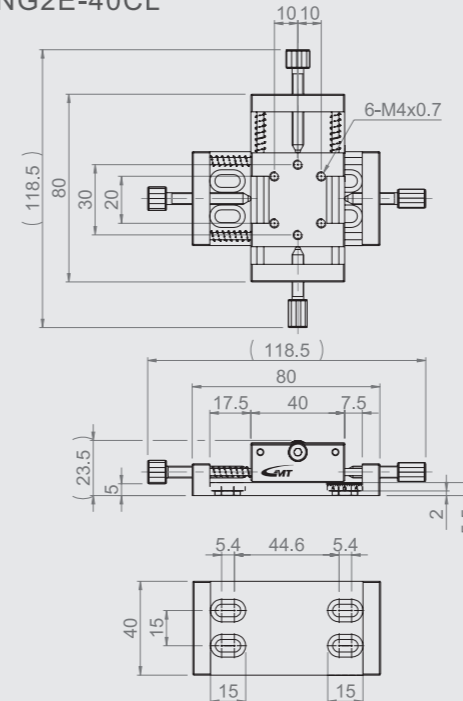
MNG2E-20CL



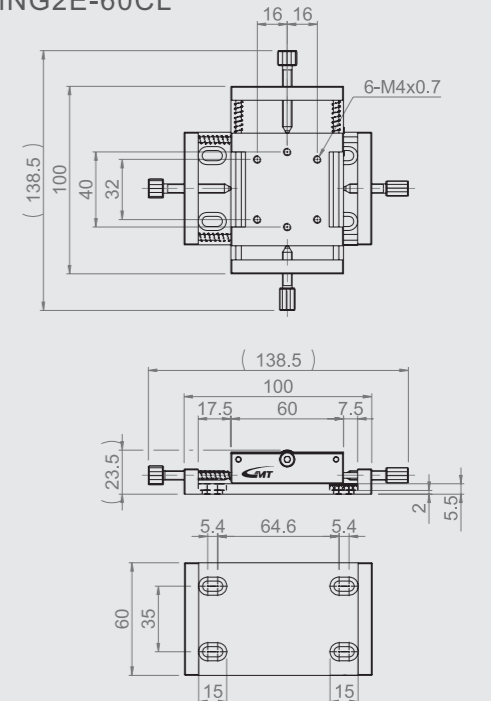
MNG2E-25CL



MNG2E-40CL



MNG2E-60CL



MNE1E-20



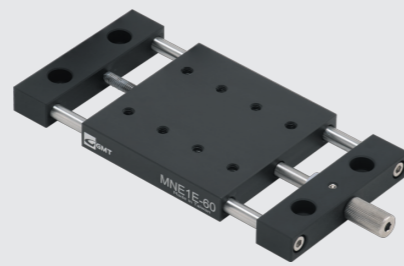
MNE1E-25



MNE1E-40



MNE1E-60

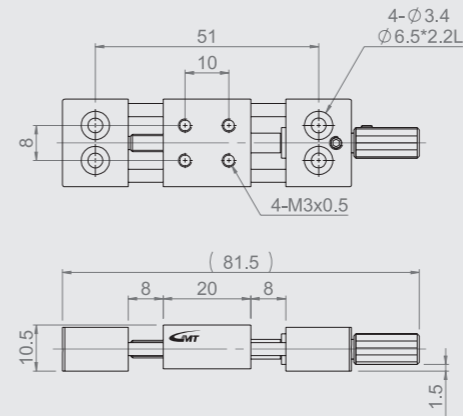


Specification

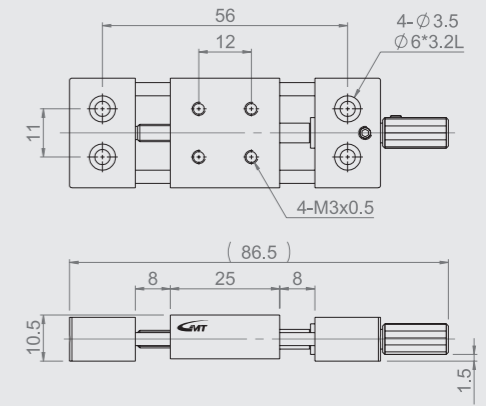
Unit : mm

Model No.	Table Size	Axis	Travel Stroke	Movement Per Knob Rotation (mm)	Allowable Loading (kgf)	Weight (kg)	Material	Surface Finish
MNE1E-20	20*20	X-axis	±7	0.7	2	0.039	Aluminum alloy	Black anodized
MNE1E-25	25*25					0.049		
MNE1E-40	40*40				0.104			
MNE1E-60	60*60				0.176			

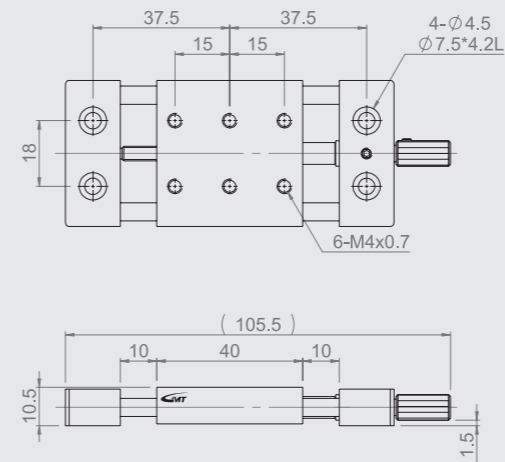
MNE1E-20



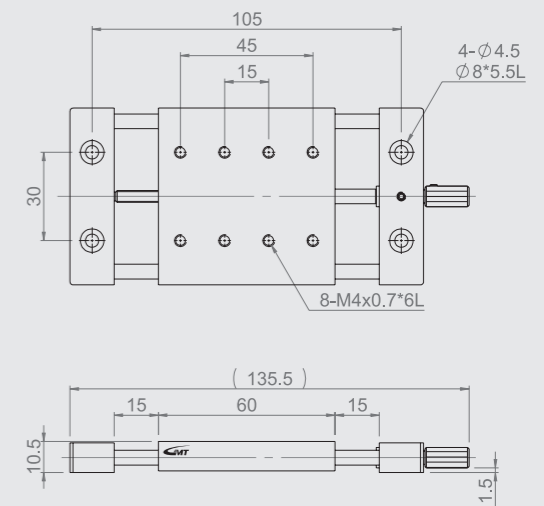
MNE1E-25



MNE1E-40



MNE1E-60



MNE2E-20



MNE2E-25



MNE2E-40



MNE2E-60

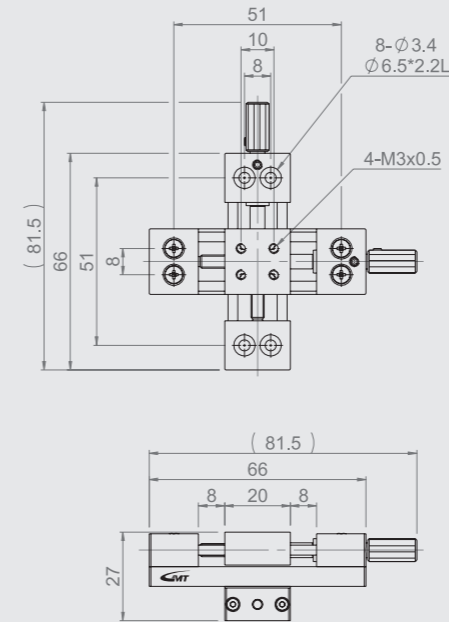


Specification

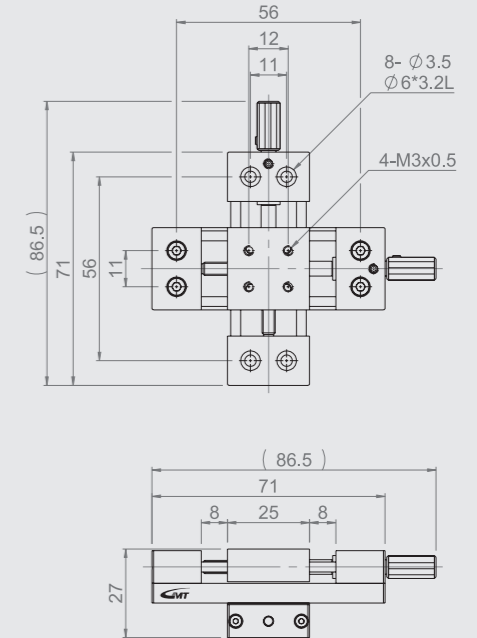
Unit : mm

Model No.	Table Size	Axis	Travel Stroke	Movement Per Knob Rotation (mm)	Allowable Loading (kgf)	Weight (kg)	Material	Surface Finish
MNE2E-20	20*20	XY-axis	±7	0.7	1.9	0.1	Aluminum alloy	Black anodized
MNE2E-25	25*25					0.13		
MNE2E-40	40*40					0.27		
MNE2E-60	60*60					0.48		

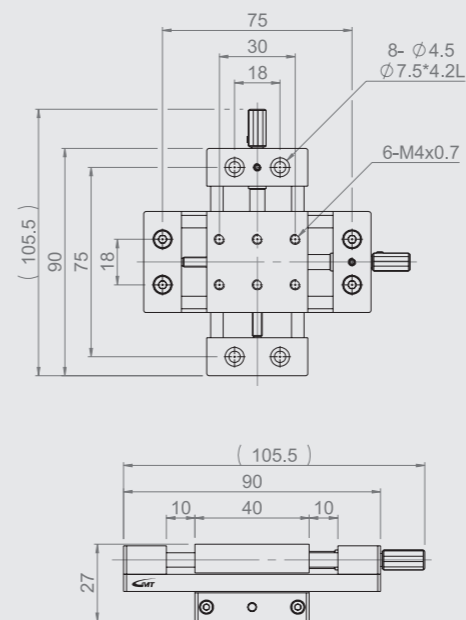
MNE2E-20



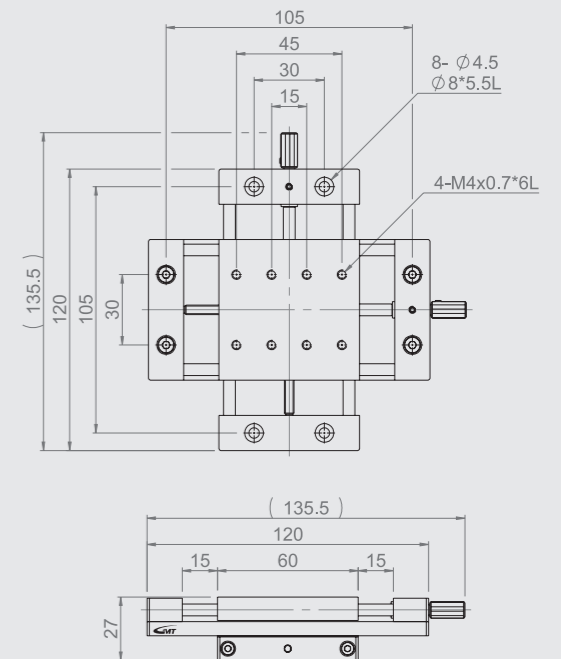
MNE2E-25



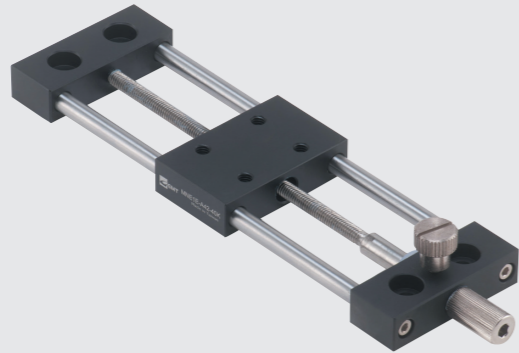
MNE2E-40



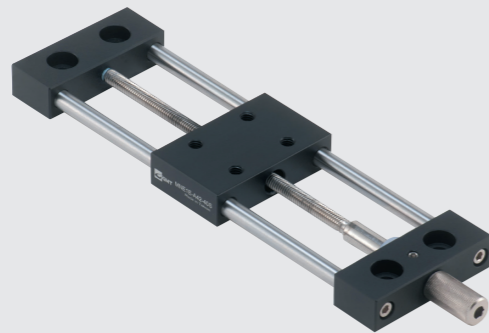
MNE2E-60



Threaded Type

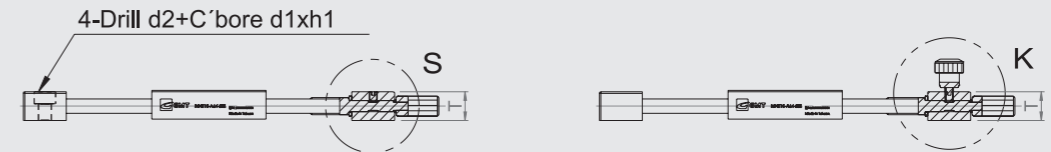
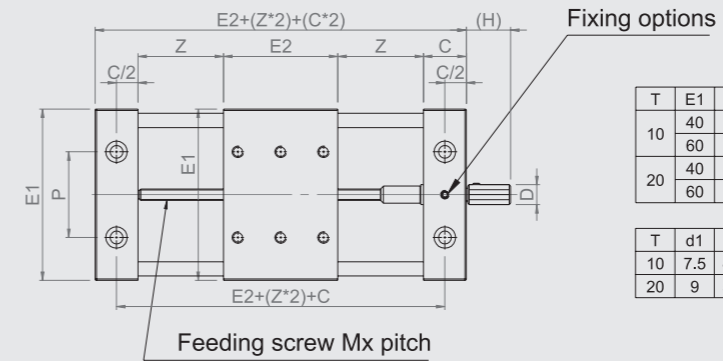


Set Screw Type

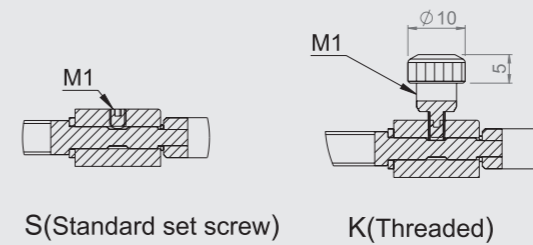


Unit : mm

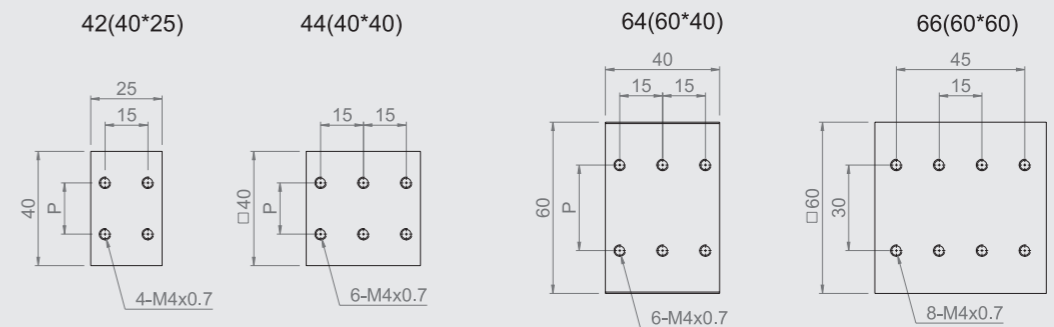
Specification				Part Name	Body	Lead Axle	Knob	Feeding Screw
Model No.				Material	A6063	SUS 304	SUS 303	SUS 304
Model No.	Thickness (T)	Table Size Code (E1*E2)	Z (Stroke Options)	Allowable Loading (kgf)	C	Position Fixing Type		
MNE1E	A(10)	44 (40*40)	10, 25, 40, 60	(Z=10, 25) 4	15 mm	S (Set screw) K (Threaded)		
		42 (40*25)		(Z=40, 60) 3.5				
		66 (60*60)	15, 30, 50, 70	(Z=15, 30) 4		S (Set screw) K (Threaded)		
		64 (60*40)		(Z=50, 70) 3.5				
	B(20)	44 (40*40)	10, 25, 40, 60	(Z=10, 25) 8	25 mm	S (Set screw) K (Threaded)		
		42 (40*25)		(Z=40, 60) 7				
		66 (60*60)	15, 30, 50, 70	(Z=15, 30) 8		S (Set screw) K (Threaded)		
		64 (60*40)		(Z=50, 70) 7				



■ Mounting Type



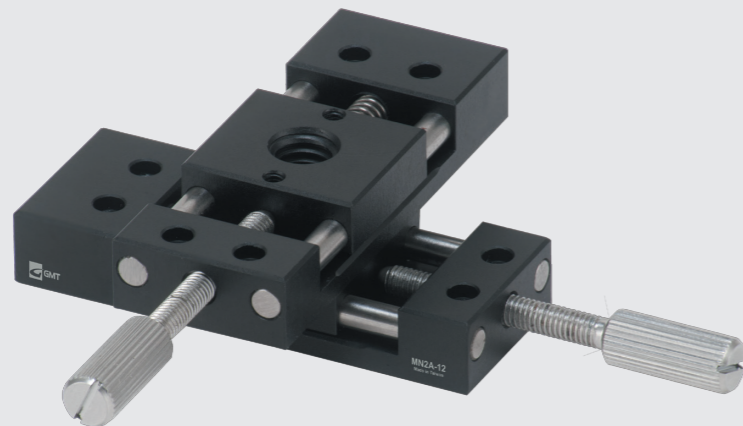
■ Upper Mounting Hole Positions



MN1A-12



MN2A-12

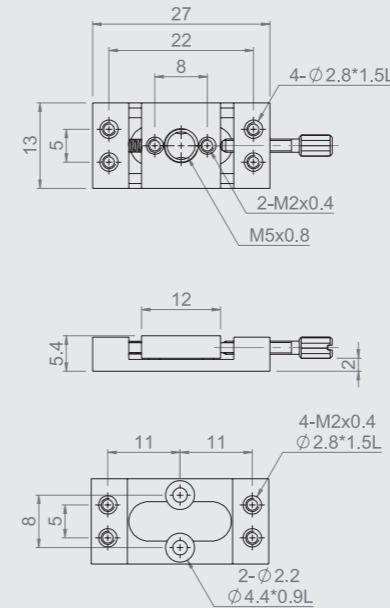


Specification

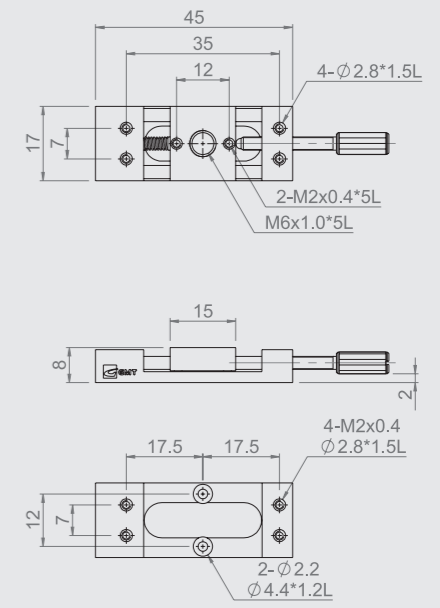
Unit : mm

Model No.	Table Size	Axis	Travel Stroke	Minimum Reading	Straightness Accuracy (μm)	Allowable Loading (kgf)	Weight (kg)	Material	Surface Finish
MN1A-12	12*13	X-axis	±1.7	No scale	50	0.5	0.005	Aluminum alloy	Black anodized
MN1A-15	15*17		±5			1	0.02		
MN2A-12	12*13	XY-axis	±1.7			0.5	0.01		
MN2A-15	15*17		±5			1	0.04		

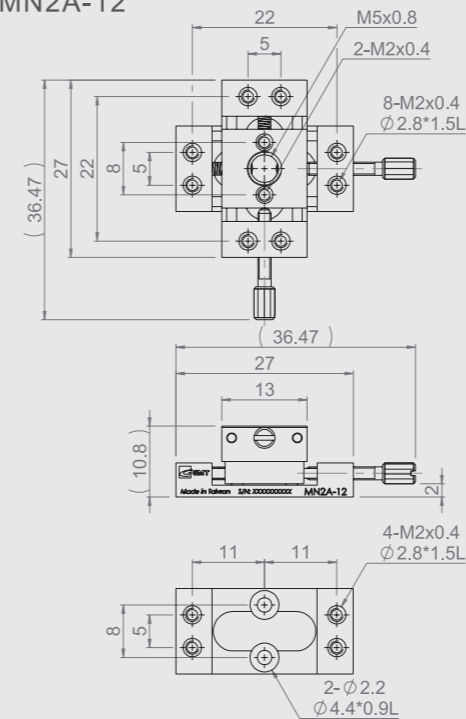
MN1A-12



MN1A-15



MN2A-12



MN2A-15

