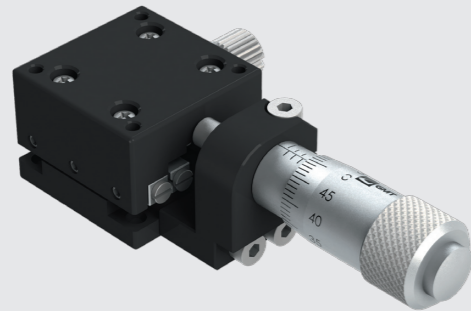
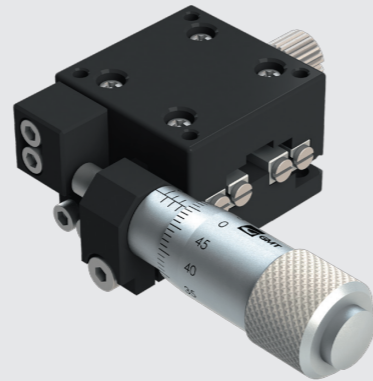


Product
Specification
**Positioning
Stages**

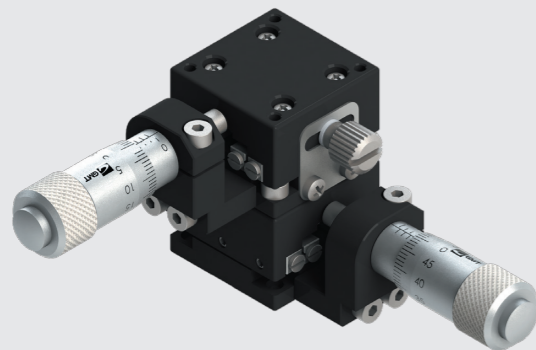
MX20-AC



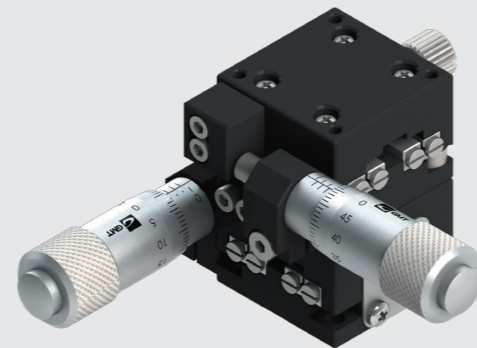
MX20-AS



MY20-AC



MY20-AS

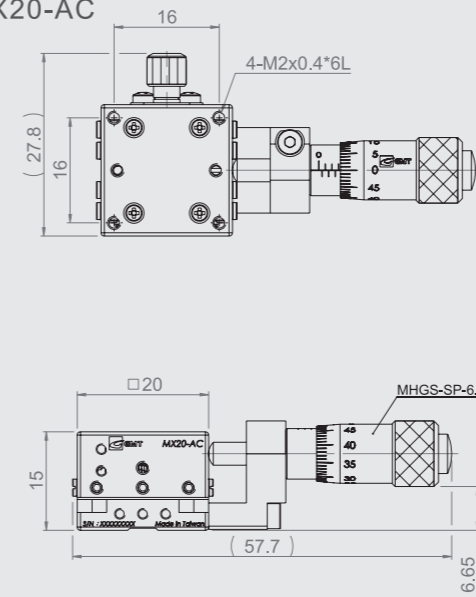


Specification

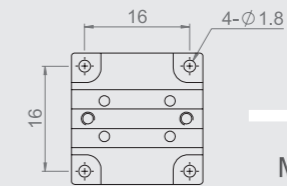
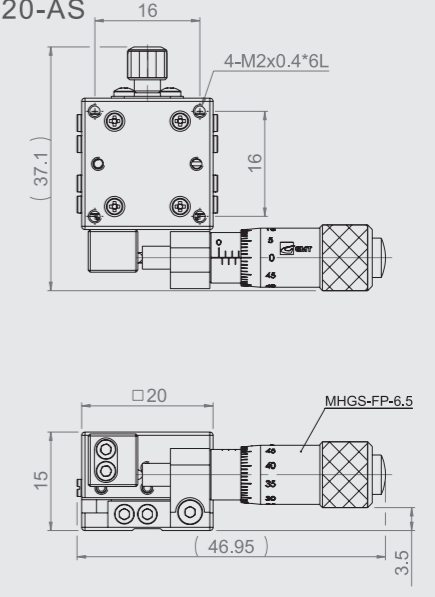
Unit : mm

Model No.	Table Size	Axis	Feed Position	Travel Stroke	Micrometer Minimum Reading (μm)	Straightness Accuracy (μm)	Allowable Loading (kgf)	Weight (kg)	Material	Surface Finish	
MX20-AC	20*20	X-axis	Central	±3.2	10	3	1	0.03	Aluminum alloy	Black anodized	
MX20-AS			Side								
MY20-AC		XY-axis	Central								0.06
MY20-AS			Side								

MX20-AC

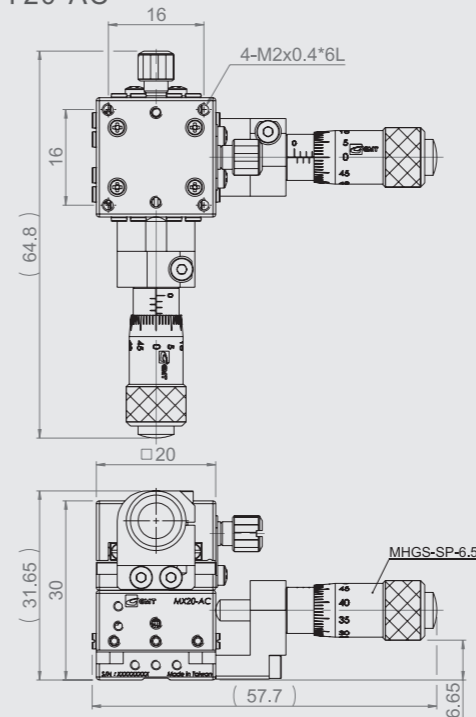


MX20-AS

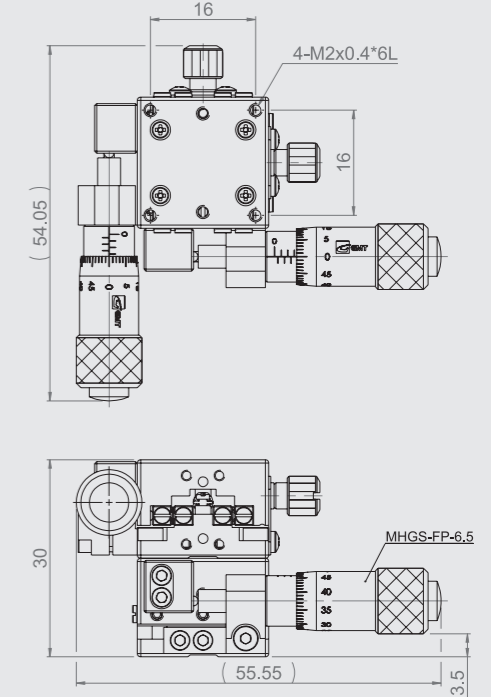


MX(Y)20-A Mounting Dimension

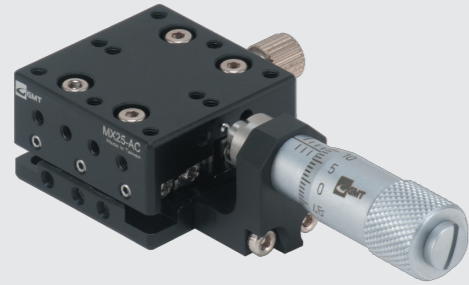
MY20-AC



MY20-AS



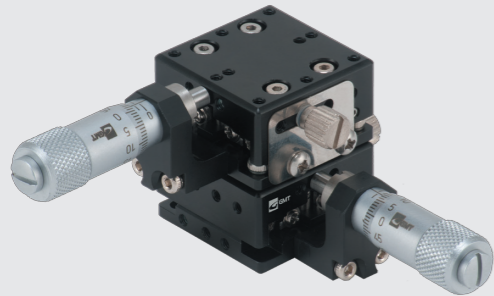
MX25-AC



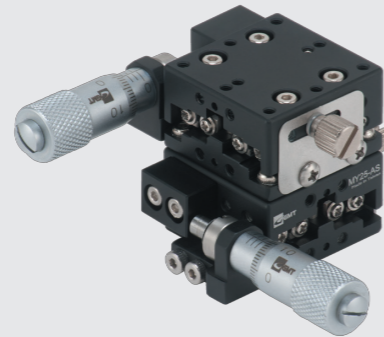
MX25-AS



MY25-AC



MY25-AS

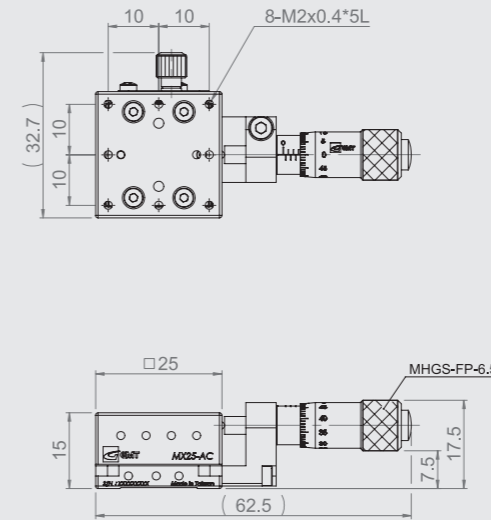


Specification

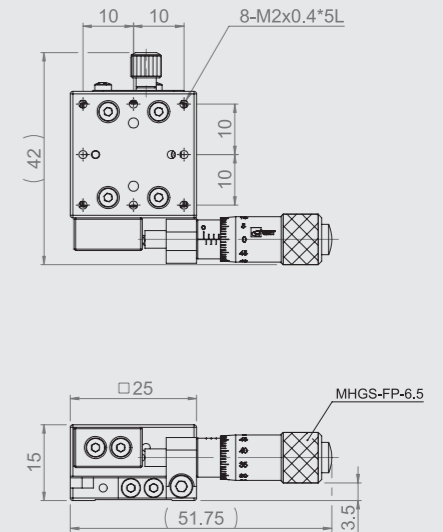
Unit : mm

Model No.	Table Size	Axis	Feed Position	Travel Stroke	Micrometer Minimum Reading (μm)	Straightness Accuracy (μm)	Allowable Loading (kgf)	Weight (kg)	Material	Surface Finish	
MX25-AC	25*25	X-axis	Central	±3.2	10	3	1	0.04	Aluminum alloy	Black anodized	
MX25-AS			Side								
MY25-AC		XY-axis	Central								0.08
MY25-AS			Side								

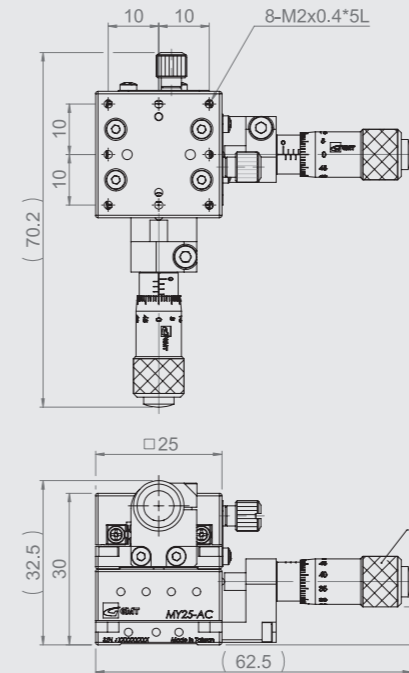
MX25-AC



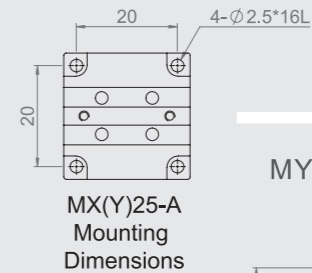
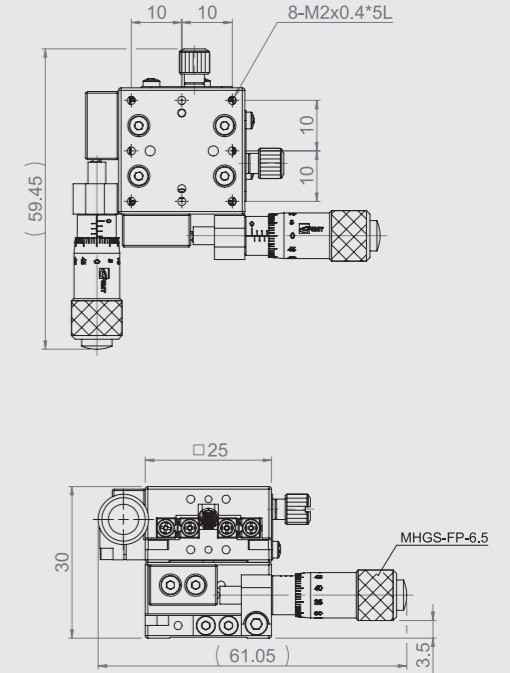
MX25-AS



MY25-AC



MY25-AS



MX40-AC



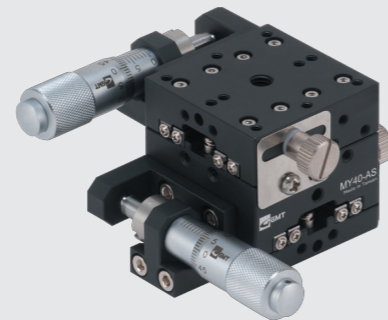
MX40-AS



MY40-AC



MY40-AS

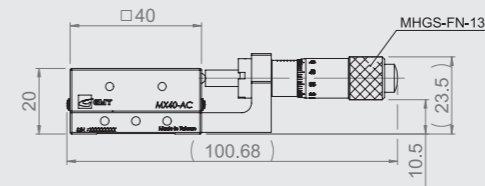
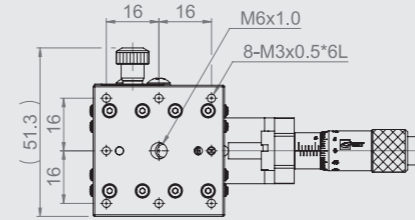


Specification

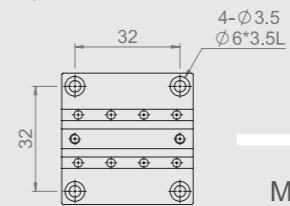
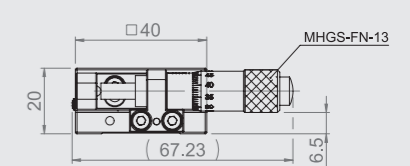
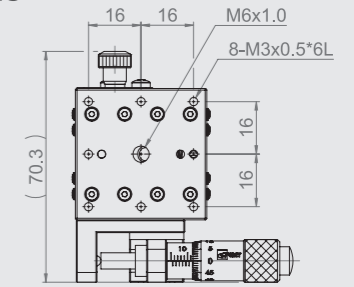
Unit : mm

Model No.	Table Size	Axis	Feed Position	Travel Stroke	Micrometer Minimum Reading (μm)	Straightness Accuracy (μm)	Allowable Loading (kgf)	Weight (kg)	Material	Surface Finish
MX40-AC	40*40	X-axis	Central	±6.5	10	3	2	0.14	Aluminum alloy	Black anodized
MX40-AS			Side							
MY40-AC		XY-axis	Central				1.8	0.3		
MY40-AS			Side							

MX40-AC

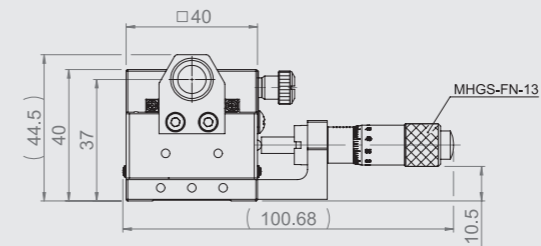
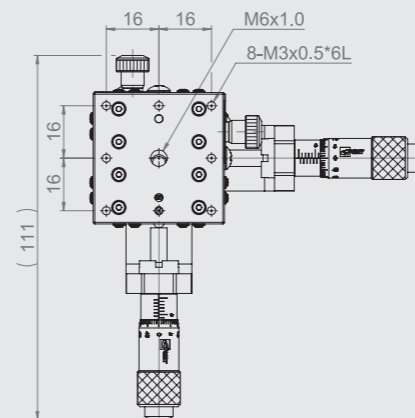


MX40-AS



MX(Y)40-A
Mounting
Dimensions

MY40-AC



MY40-AS

